

# Viola

## Psalm 23

Words and Music by  
Tom Pennington, Sheila Pennington  
Benjamin Mason, Lauren Mason

Stately (♩ = 66)

4

*mf*

7

Verse

9

*p* *mf*

19

Verse

*mf*

23

27

Chorus

2

*f* *mf*

32

36

Viola

Psalm 23 -2-

40 Verse

*mp*

44

48

*p*

52

56

*mf*

60

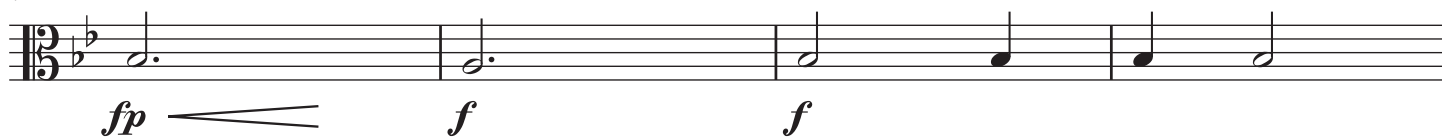
64

68

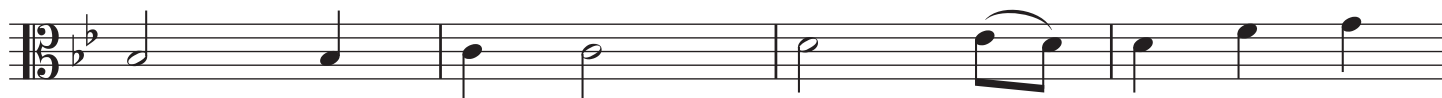
# Viola

## Psalm 23 -3-

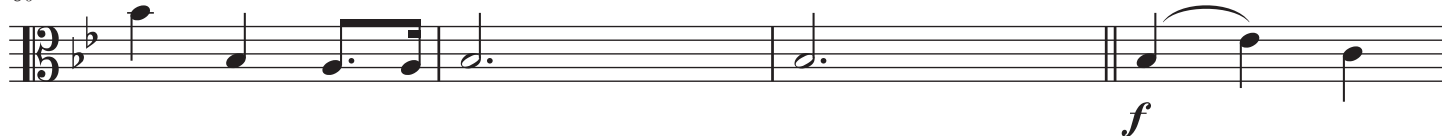
72



76



80



84



88



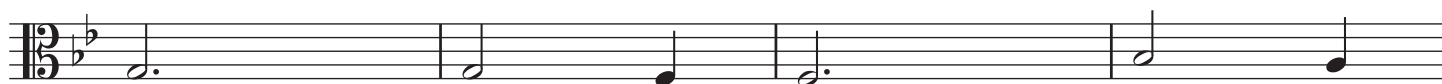
92



96



100



Viola

Psalm 23 -4-

104

*Poco Rit.*

Violin staff with musical notation. The staff is in treble clef with a key signature of one flat (B-flat). The notation includes a half note G4, a half note A4, a quarter note Bb4, and a quarter note A4. A slur covers the first two notes. The piece ends with a double bar line and a fermata over the final note.