

Bassoon

# Our God Has Magnified His Word

Written and Arranged by  
TOM PENNINGTON, SHEILA PENNINGTON  
and JOSHUA SPACHT  
Orchestrated by THOMAS GRASSI

Uplifting, contemporary feel ♩ = ca. 58-60

2nd time only (optional) 1.

drum fill

1 2 *mp* *mf* 3 4

2.

10

(6-15) 16 17 18

1st Ending

19 20 21 22 23 24

2nd Ending

25 26 *f* 27 28 29

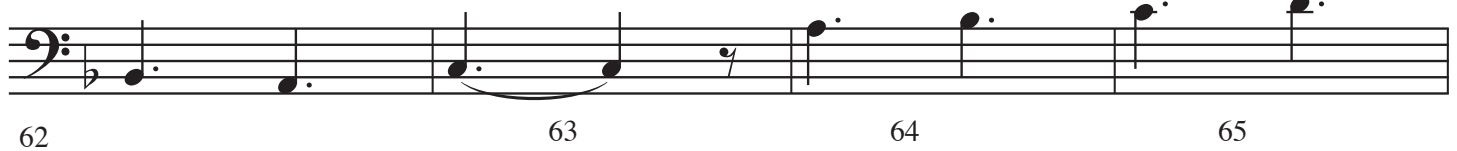
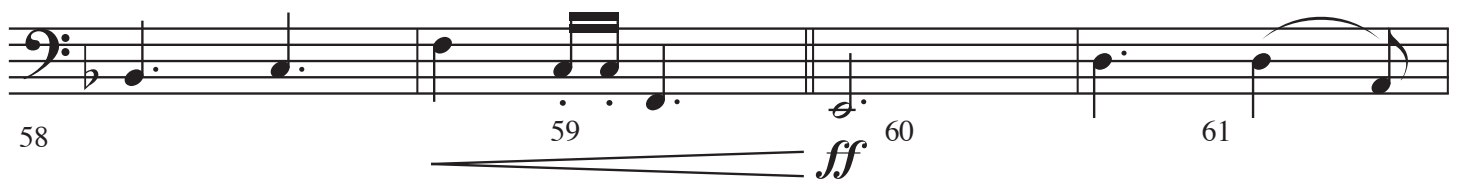
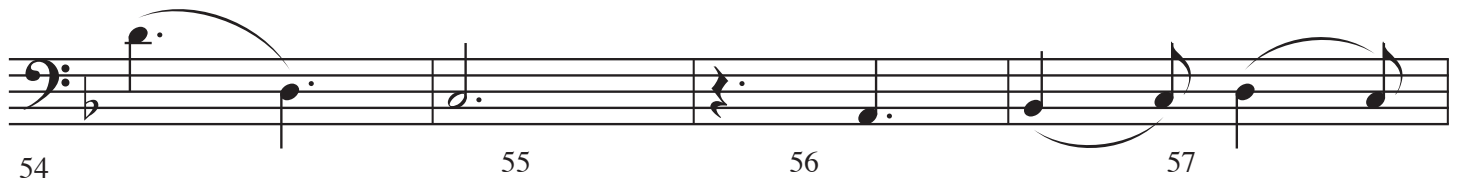
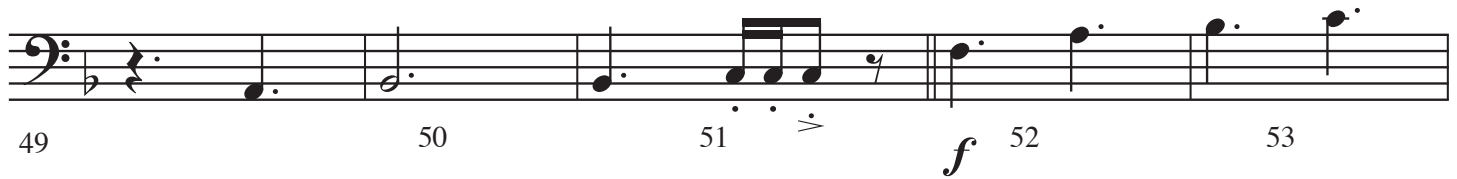
7

30 31 32 33 (34-40)

41 *mf* 42 43 44

The image shows a bassoon part for the hymn 'Our God Has Magnified His Word'. The music is written in bass clef with a key signature of one flat (Bb) and a 6/8 time signature. The tempo is marked as 'Uplifting, contemporary feel' with a quarter note equal to approximately 58-60 beats per minute. The piece begins with a 'drum fill' on measures 1-4, followed by a first ending on measures 5-18. A second ending on measures 19-24 leads to a final ending on measures 25-29. The music concludes with a 7-measure rest on measures 30-33, followed by a final flourish on measures 34-40. Dynamics include *mp* (mezzo-piano), *mf* (mezzo-forte), and *f* (forte). The piece is marked with various musical notations such as slurs, ties, and repeat signs.

Our God Has Magnified His Word, Bassoon, page 2



# Our God Has Magnified His Word, Bassoon, page 3

71 72 73

Staff 71-73: Bassoon part, measures 71-73. The staff is in bass clef with a key signature of one flat (B-flat). Measures 71-73 contain a melodic line with a slur over measures 71-73. Measure 71: quarter note G2, quarter note F2. Measure 72: quarter note E2, quarter note D2. Measure 73: quarter note C2, quarter note B1.

74 75 76 77 78

Staff 74-78: Bassoon part, measures 74-78. The staff is in bass clef with a key signature of one flat (B-flat). Measures 74-78 contain a melodic line with a slur over measures 74-78. Measure 74: quarter note G2, quarter note F2. Measure 75: quarter note E2, quarter note D2. Measure 76: quarter note C2, quarter note B1. Measure 77: quarter note A1, quarter note G1. Measure 78: quarter note F1, quarter note E1.

79 80 81 82 83

Staff 79-83: Bassoon part, measures 79-83. The staff is in bass clef with a key signature of one flat (B-flat). Measures 79-83 contain a melodic line with a slur over measures 79-83. Measure 79: quarter rest. Measure 80: quarter note G2, quarter note F2. Measure 81: quarter note E2, quarter note D2. Measure 82: quarter note C2, quarter note B1. Measure 83: quarter note A1, quarter note G1.